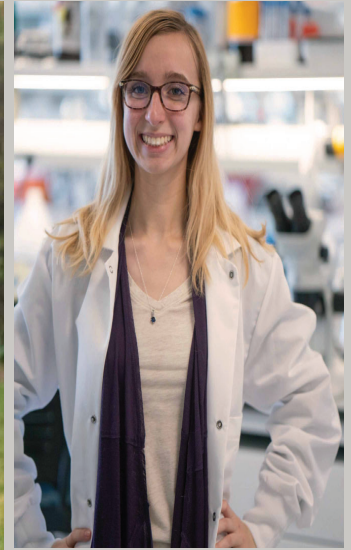


RCHE GRADUATE STUDENT SEMINAR

The Regenstrief Center for Healthcare Engineering (RCHE) brings together researchers and practitioners from multiple disciplines to collaboratively improve healthcare delivery and empower individuals to live their highest quality of life. RCHE's monthly Graduate Student Seminar is designed to showcase the interdisciplinary workings of our affiliated faculty and their graduate students. With this series, we hope to build a community of students and faculty that can share their knowledge, develop presentation skills, and collaborate with department members for additional opportunities all working to improve healthcare.



Esmaeil Bahalkeh



Muriel Eaton

Please join us on Monday, September 21st at 2 pm for our first [virtual](#) Graduate Student Seminar. Our presenters this month are Esmaeil Bahalkeh and Muriel Eaton. Esmaeil is a Ph.D student in Industrial Engineering, Advised by Yuehwern Yih and will discuss "Impact of Long-Stay Patients on Hospital Flow and Capacity." Muriel is a Ph.D student in Medicinal Chemistry and Molecular Pharmacology, advised by Yang Yang and will discuss "A neurobiological perspective to patient-driven pain management".

DATE:

Monday September 21st

LOCATION:

Join us via [WebEx](#)

TIME:

2 - 3 pm EST